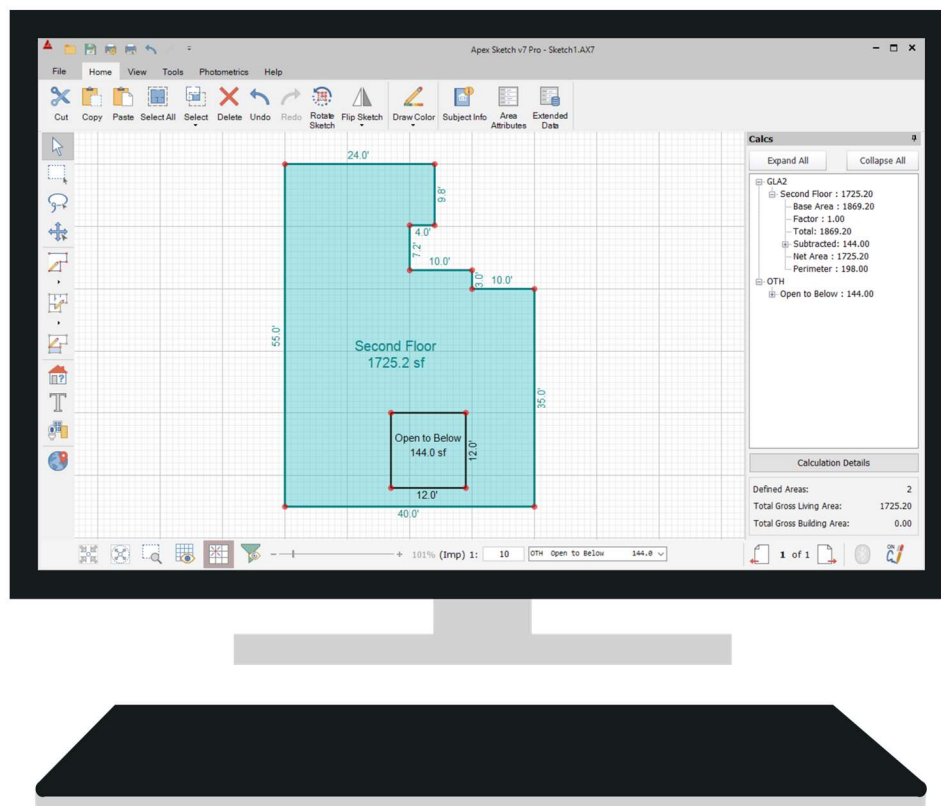


Apex Sketch v7

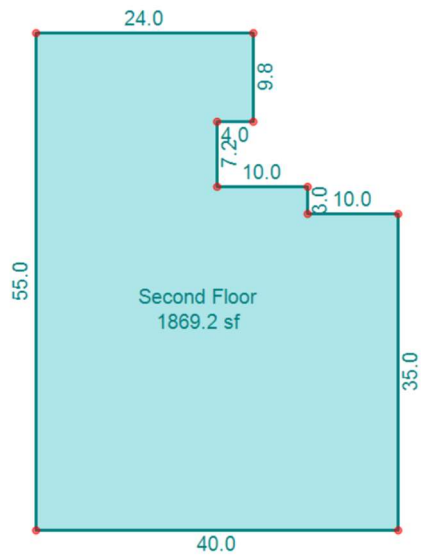
Define First - Auto-Subtract



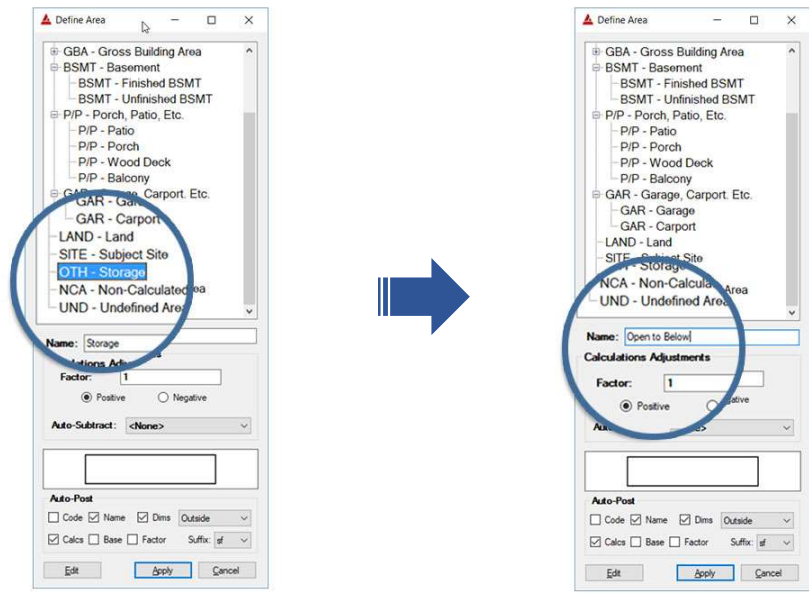
Apex Sketch Version 7 – Auto-Subtract

This tutorial covers the use of Auto-Subtract in Apex Sketch v7 (Av7) when using the Define First drawing method. Auto-Subtract is a special Calculation Adjustment that allows you to define and subtract an Area from any other Area of your choice (except the same type of Area). Auto-Subtract is traditionally used when sketching wrap-around porches, pool aprons, staircases, open to below areas, etc.

In the example below, we have an **Open to Below** Area that needs to be subtracted from the **Second Floor**. The first thing you will need to do is draw out the Second Floor:

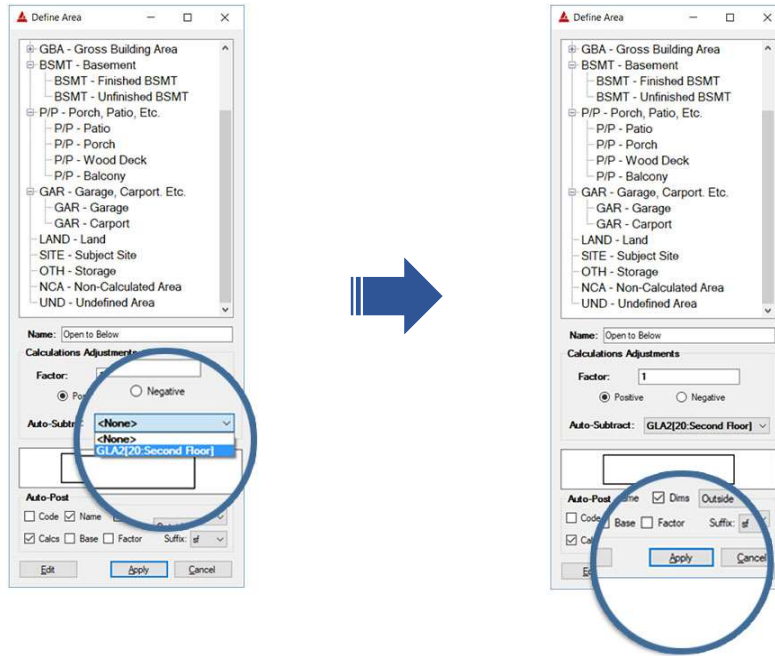


With the **Second Floor** drawn in Av7, click on the **Draw Area** icon. In the Define Area window select **OTH - Storage** from the list of Areas. You can change the name of the area from Storage to Open to Below using the Name text box.



Auto-Subtract (continued)

Next, click the Dropdown Arrow to the right of **Auto-Subtract** and select the area you would like to subtract from. In this example we will select **GLA2 - Second Floor**. Click the **Apply** button and you're ready to sketch the "open" Area.



Finally draw out the "open" area. When the area is closed it will automatically be subtracted from the selected area (Second Floor in this example). You will notice the calculation posted for the Second Floor has been updated to reflect the subtracted square footage. You can check your calculations by clicking on the **Calcs Tab** (F6).

